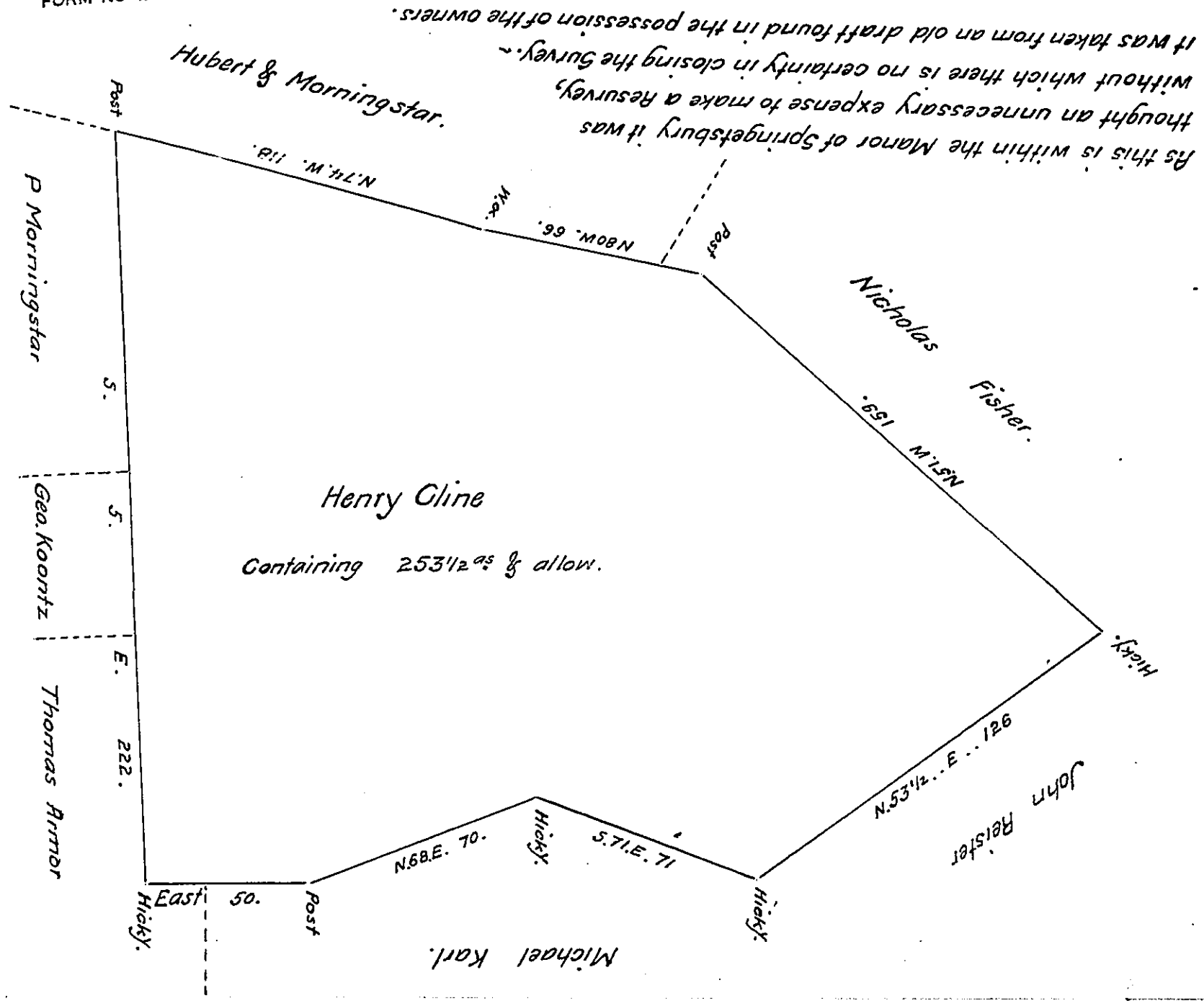


FORM NO 1.



Situate in Heidleberg township in the County of York Containing as above set forth 253 1/2 Acres and the usual allowance &c. Originally Surveyed in pursuance of a Warrant granted to Henry Gline for 200<sup>acs</sup> dated the 18<sup>th</sup> day of October 1738. Calculated examined &c. the 16<sup>th</sup> day of December 1828, and Returned per Contract. Owned and occupied by Michael Newman and Conrad Foltz, the whole of the above Land is embraced in a Survey made and held under a Maryland Patent called "Digg's Choice". ~

To Gabriel Hiester Esq. }  
Surveyor General }

Danl Small D.S.

IN TESTIMONY that the above is a copy of the original remaining on file in the Department of Internal Affairs of Pennsylvania, made conformably to an Act of Assembly approved the 16th day of February, 1833, I have hereunto set my Hand and caused the Seal of said Department to be affixed at Harrisburg, this seventeenth day of December 1908

*Henry Hancock*  
Secretary of Internal Affairs.